

# PRIME

## ADDITIVE FEEDER

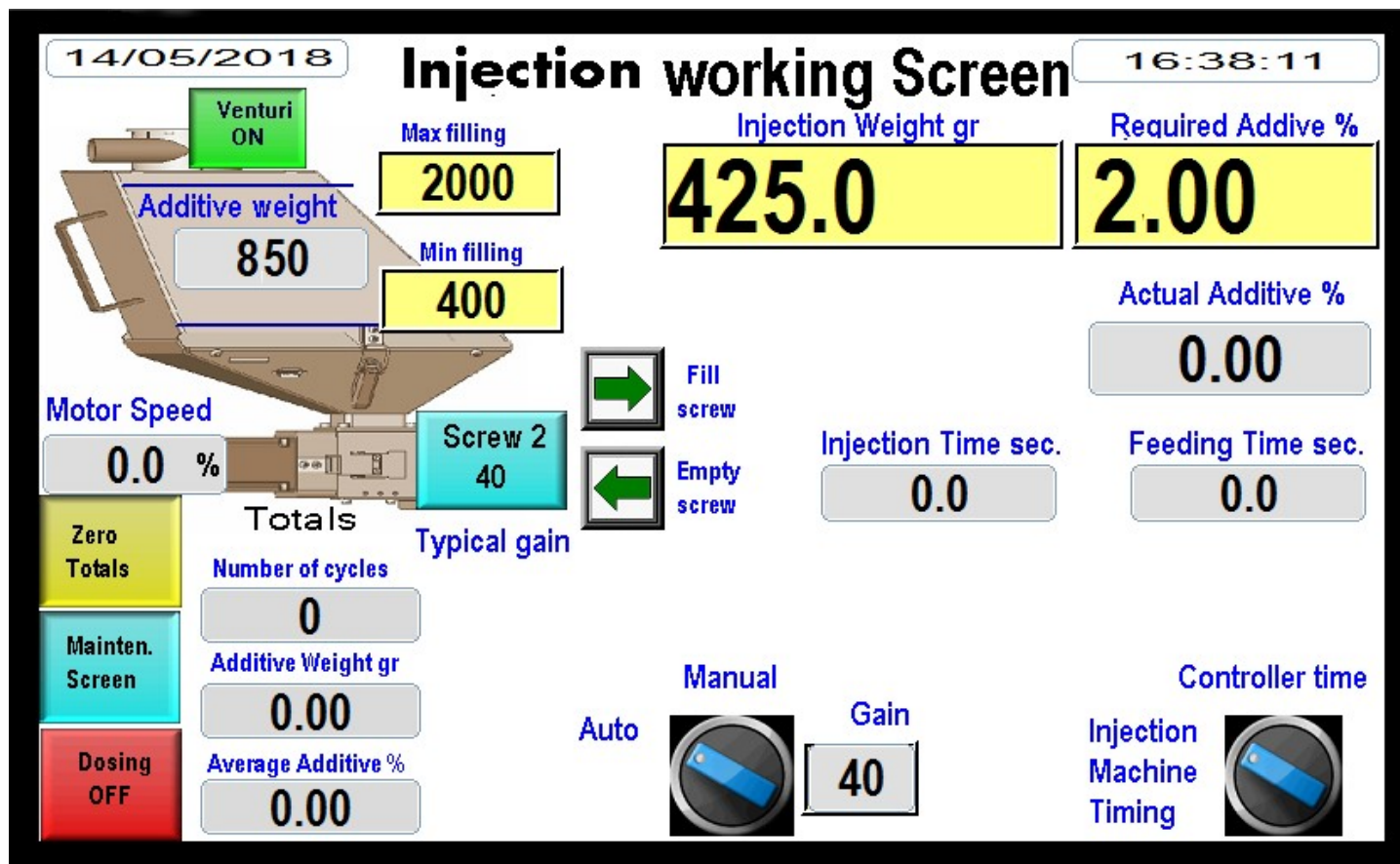


- ❖ Gravimetric feeding of one additive for Injection molding and blow molding Machines. Installed on the machine throat.
- ❖ Loss In weight controlling. Sophisticated weighing algorithm.
- ❖ 6 kg accurate load cell with mechanical protection.
- ❖ Precision in weighing of 0.2 gr. 1000 samples/sec.
- ❖ 7.5" touch screen, operators "user friendly".
- ❖ Accumulated data collecting system
- ❖ Automatic dynamic weighing setup
- ❖ TCP/IP communication protocol.
- ❖ 3.2 Liter weighing hopper
- ❖ Step motor -24V-DC 4.5A.
- ❖ Power supply – 110-220V±10% 50/60HZ .
- ❖ Automatic additive venturi loader.
- ❖ Fast emptying of the additive by a special shutter.
- ❖ Fast disassembling. No need of any tools.

Prime additive feeders Ltd. Hahaklaim st. 1 Alon Hagalil 1792000 Israel

[or@prime-additive-feeders.com](mailto:or@prime-additive-feeders.com)

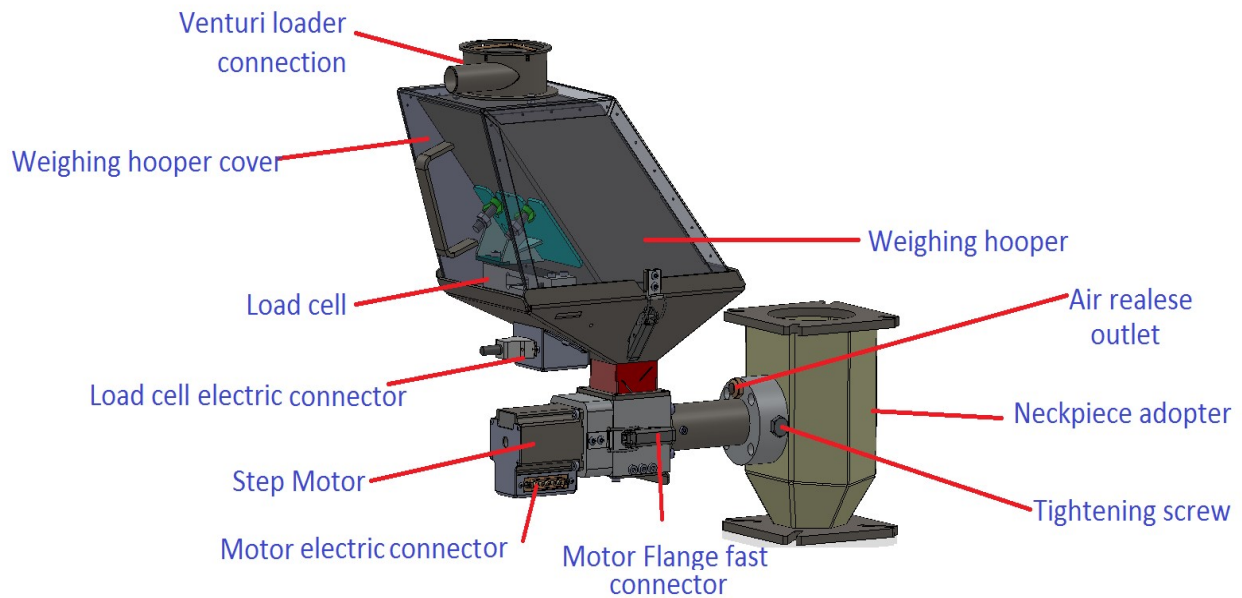
[www.prime-additive-feeders.com](http://www.prime-additive-feeders.com)



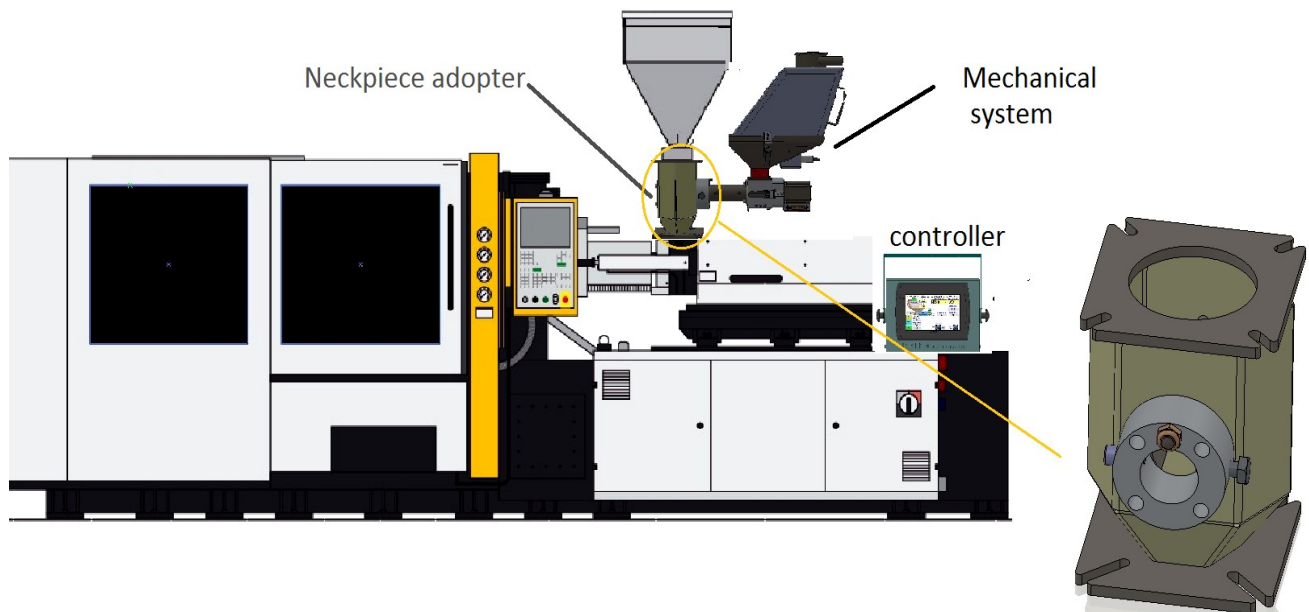
**All needed data and operation functions  
On one main screen**



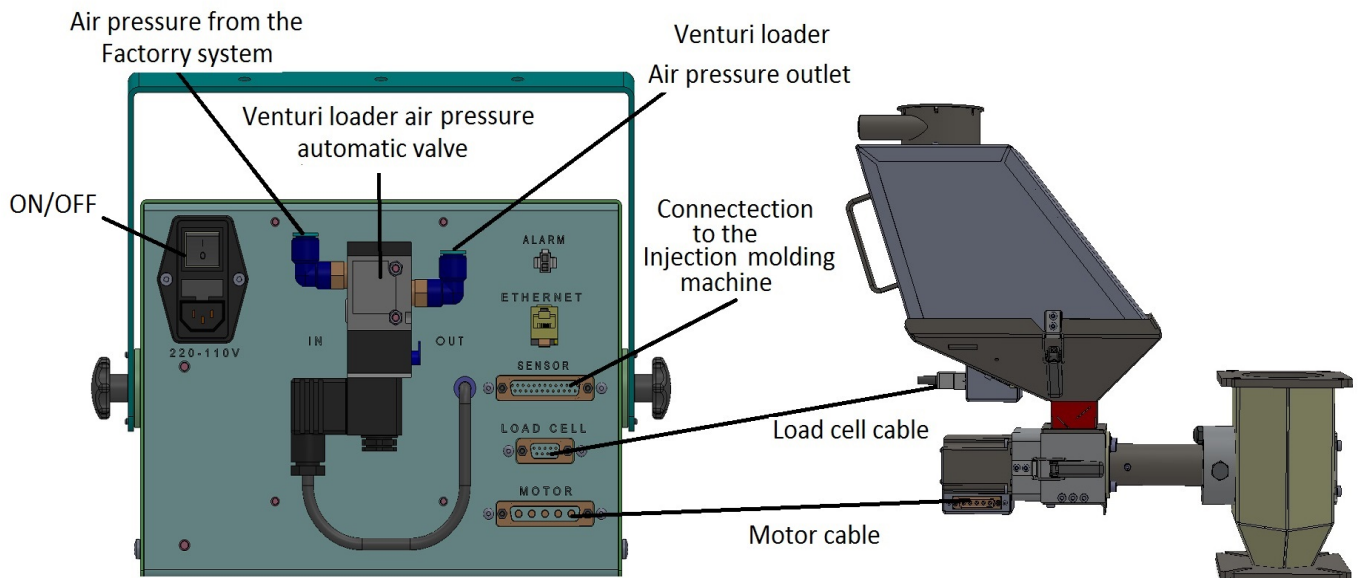
## The mechanical system



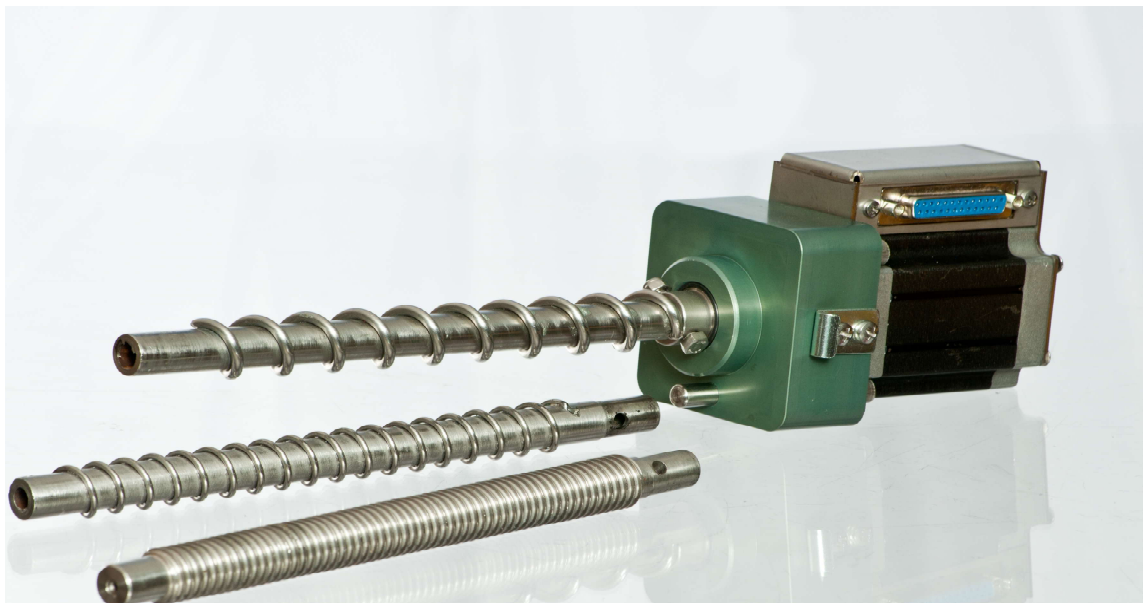
## The installation



## The mechanical system and the controller Inputs and outputs



## The motor and the feeding screws



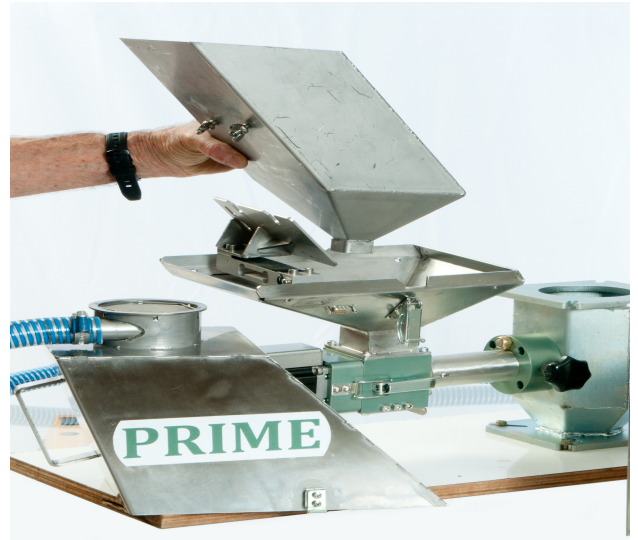


## The fast emptying and cleaning process

1. Opening of the fast emptying shutter



2. Taking off the weighing hooper cover and taking apart the weighing hooper



3. Opening and disconnecting the Motor and feeding screw unit

